

**MICHELIN GRAVEL RALLY RANGE**  
**LTX FORCE T & LTX FORCE T XL**



**MICHELIN**

*A better way forward*



# LTX FORCE T & LTX FORCE T XL

GRAVEL RANGE

## LTX FORCE T & LTX FORCE T XL RANGE DIMENSIONS

|           |                |          |
|-----------|----------------|----------|
| 17/65-15  | LTX FORCE T XL | 70-80-90 |
| 17/65-15  | LTX FORCE T    | 70-80-90 |
| 18/66-15* | LTX FORCE T    | 80       |

\* Available July 2016.



17/65-15 LTX Force T XL 90

## MICHELIN LTX FORCE & LTX FORCE T XL

Developed and proven in WRC 2, the LTX Force T is the new asymmetrical\* tyre solution for Gravel Rally.

Featuring a new reinforced carcass, a new unique and sturdy tread more suited to all types of terrains, the LTX Force T steps Gravel Rally performance up ever further in sturdiness and excellence.

➔ Up to 0.3 sec. faster per kilometer.

\* A single tire for all vehicle positions.

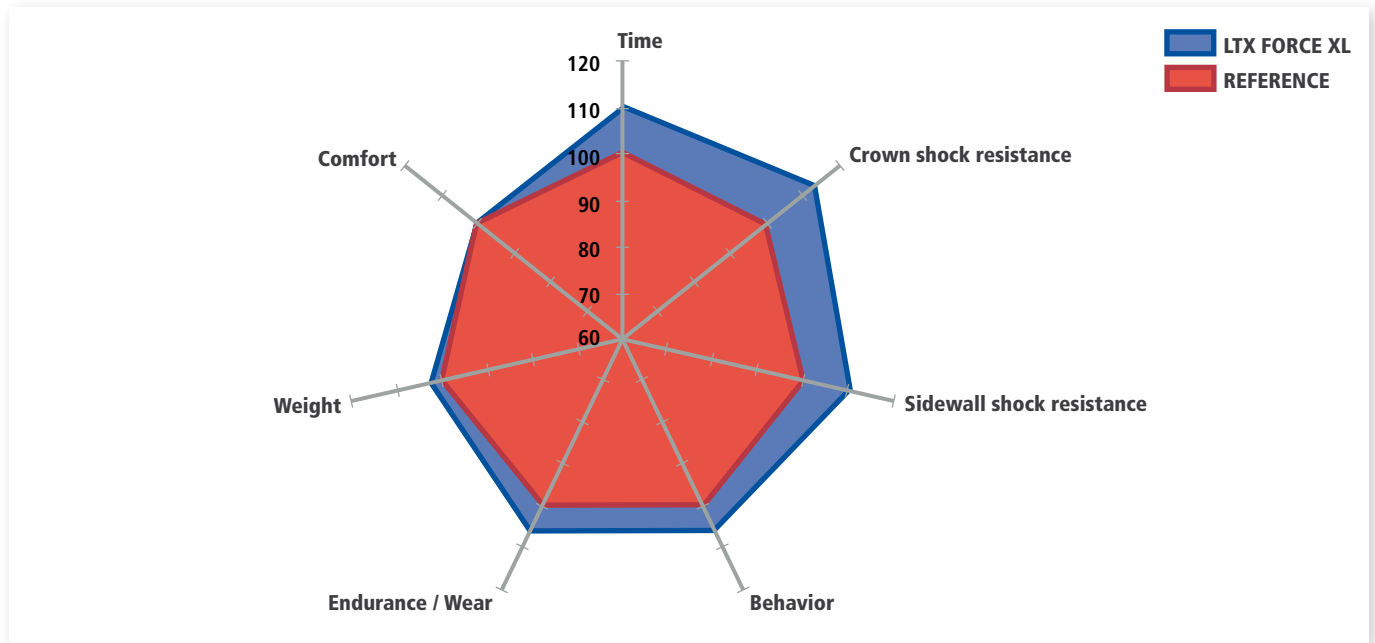
## USES

| COMPOUND      |      | SURFACE |         |         | CONDITION |       |     | TEMPERATURE |   |   |    |    |    |    |    |     |
|---------------|------|---------|---------|---------|-----------|-------|-----|-------------|---|---|----|----|----|----|----|-----|
| Hardness      | Type | Gravel  | Compact | Brittle | Mud       | Humid | Dry | -5          | 0 | 5 | 10 | 15 | 20 | 25 | 30 | 30+ |
| Soft          | 70   | ■       | ■       | ■       | ■         | ■     | ■   | ■           | ■ | ■ | ■  | ■  | ■  | ■  | ■  | ■   |
| Medium – Soft | 80   | ■       | ■       | ■       | ■         | ■     | ■   | ■           | ■ | ■ | ■  | ■  | ■  | ■  | ■  | ■   |
| Hard          | 90   | ■       | ■       | ■       | ■         | ■     | ■   | ■           | ■ | ■ | ■  | ■  | ■  | ■  | ■  | ■   |

# LTX FORCE T & LTX FORCE T XL

GRAVEL RANGE

## MICHELIN LTX FORCE RANGE POSITIONING



## TREAD TECHNOLOGY AND ARCHITECTURE

### Solid blocks and wide wells

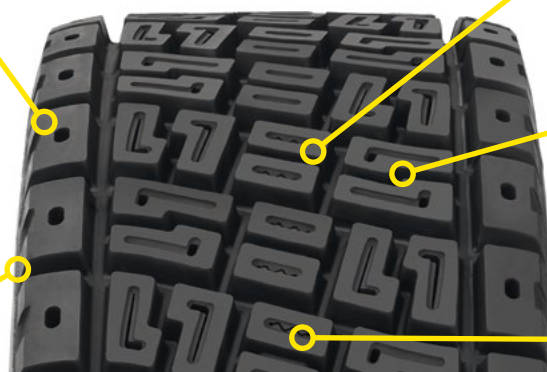
- ➔ Sturdy without thermal runaway

### Asymmetric tread

- ➔ Interchangeable right-left fitting
- ➔ Longer life

### Sidewalls with metallic protection

- ➔ Shock resistant



### New WRC tread

- ➔ Improved grip / wear

### Interlocked L-block tread

- ➔ Shimming for greater driving precision
- ➔ Improved tear-resistance

### ZigZag sipes

- ➔ self-blocking
- ➔ drive and strength





[www.michelinmotorsport.com](http://www.michelinmotorsport.com)

